

Board of Advisors:

Marv Birnbaum, MD, PhD
Lawrence H. Brown, EMT-P
Elizabeth Criss, RN, MEd
William J. Koenig, MD, FACEP
Gregg Margolis, MS, NREMT-P

Director:

Baxter Larmon, PhD, MICP

Managing Director:

Todd F. LeGassick, MPH

Committee Chairs:

Abstract Review

Harold C. Cohen, MS, EMT-P

Communications

Nancy Hays, MPH

Education

Matthew Zavarella, NREMT-P

Information & Resources

James Dernocoeur, PA-C, EMT-P

Associates:

Terry Abrams, MS, EMT-P
Scott S. Bourn, RN, MSN, EMT-P
Elaine Christiansen, PhD
Dwayne E. Clayden, EMT-P
Joseph Corley, EMT-P
Megan Corry, MA, EMT-P
Chuck Crawford, MS, EMT-P
Andrew Dahl, BA
Alice Dalton, RN, BSN
Robert De Lorenzo, MD, FACEP
Robert Delagi, MA, NREMT-P
Phillip Dickison, NREMT-P
William Dunne, MS, NREMT-P
Scott Eamer
Michael R. Gunderson, EMT-P, CQM
David Harrawood, RM, REMT-P
Thomas LeMaster, RN, REMT-P
Wolfgang H. Maleck, Arzt, EMT-P
Mark Marchetta, RN, NREMT-P
Mary Kay Margolis, MHA, MPH
Richard Narad, DPA
Madeleine O'Donnell, RN, BEd, BNG
Steven J. Rottman, MD, FACEP
Chris Thos. Ryther, BS, NREMT-P
David L. Schrager, MD, MPH
Helen Snooks, BSc
Andrew W. Stern, MPA, MA, NREMT-P
Ronald D. Stewart, MD, FACEP
Walt Alan Stoy, PhD, EMT-P
Mike Taigman
William F. Toon, BA, NREMT-P
Atilla Üner, MD, FAAEM
Donald Walsh, PhD, EMT-P

Affiliates:

National Association of EMS
Educators
National Association of EMTs

Founding Partner:

Jems Communications

Benefactors:

Laerdal Medical Corp.
Medtronic Physio-Control Corp.

Partners:

Ferno
SSCOR, Inc.
Zoll Medical Corp.

PCRf Awards Researchers

As many of you experienced first hand, EMS Today, held in March in Orlando, proved to be one of the best showings to date for the Prehospital Care Research Forum. A preconference event, the "Demystifying Prehospital Research, Managing Data to Improve Everything You Do" workshop, was attended by 32 enthusiastic novice researchers. Over the course of two days participants were introduced to research design and methods and conducted a research project.

National Conferences Showcase Research Forum

Later in the week the Research Forum showcased the results of our annual Call for Abstracts. Over 50 abstracts were submitted from around the world in 1999. Of those, six abstracts — selected from the categories of clinical, systems, management, and personnel — were chosen for oral presentation, plus an additional 15 for poster presentation at the conference. The oral presentation luncheon was filled to capacity. Attendees enjoyed a collegial environment and learned about

some budding research in EMS. Capt. Kevin Easton, Sarasota County Fla. Fire Department, whose research was determined to be the best submitted in 1999, was also awarded Best Quantitative Abstract with his research titled, "Weight! Is That Enough Medication? Step Right Up and Let the Paramedics Guess Your Weight."

Megan Corry, San Francisco Fire Department EMS Division, received Best Oral Presentation for "Prehospital Ambulatory EEG Monitoring of Adult Patients in Convulsive Status Epilepticus." Paul Bishop, Rural / Metro Medical Services, Rochester, N. Y., was the recipient of Best Poster for "The Role of Emergency Lights and Sirens in Ambulance Accidents." Best Qualitative Abstract went to Helen Snooks, London Ambulance Service, for her work titled, "How Do Paramedics Compare to Nurses in Giving Telephone Advice to Non-urgent Emergency Callers to the Ambulance Service?"

In early September the top four abstracts submitted in the category of education were presented at the National Association of EMS Educators Conference in Phoenix.

(Continued on page 3)

Inside The Forum News...

- PCRf Awards Researchers
- Welcome to *The Forum News*
- Why Does the Forum Exist?
- Research Curriculum Finalized
- Committee Reports
- One-day Workshop Update
- Researchers Surveyed

Our Mission: To assist in building a body of knowledge that examines prehospital care.

Welcome to The Forum News

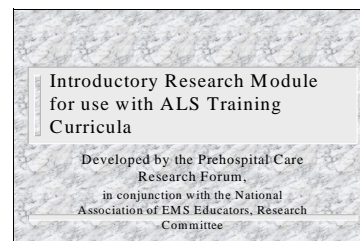
By Baxter Larmon, PhD, MICP

Welcome to the inaugural edition of *The Forum News*, developed to communicate information on and about the Prehospital Care Research Forum. As our activities continue to impact the EMS community we're excited to offer a new avenue for disseminating news to our constituents. We welcome your suggestions and invite you to contact us if you would like to contribute to future issues. *The Forum News* will be distributed quarterly.

Thank you for your continued energy, support, and commitment to the Prehospital Care Research Forum. You are a critical part of our success — none of this would be possible without you.

Research Curriculum Finalized

A one-hour research curriculum has been developed as a PowerPoint presentation and is now available for your review on the PCRf Web site at www.pcrf.mednet.ucla.edu. Introduced this year at the National Association of EMS Educators Conference, this component is specifically designed to provide EMT-Ps with the national standard curricula as outline by the Department of Transportation. With practice the module requires about 45 minutes to one hour to present.



Why Does the Forum Exist?

The Board of Advisors spent an afternoon at EMS Today in a strategic planning session lead by Mike Taigman. We discussed and debated questions geared toward the heart of the Prehospital Care Research Forum: Why does the Prehospital Care Research Forum exist? What would happen if it no longer existed? What does the organization value? This conversation yielded several results which we are pleased to share with you.

What do we use to guide our activities and the decision-making process?

Advocacy – We are advocates for our colleagues, researchers, and the EMS community.

Leadership – We will serve EMS as role models and mentors. We will work cooperatively with our community.

Creating Knowledge – We encourage intellectual curiosity and courage in forging ahead. We value activities that make a difference and have an impact.

Integrity – We are committed to the professionalism of EMS, fairness, honesty and the truth. We will operate with the highest degree of ethics.

Fun – We are committed to creating an environment that, while recognizing the seriousness of our work, is enjoyable.

Open-mindedness – We are flexible in our approach and activities and not attached to any specific outcome.

While all these items have been tracked and discussed, we have begun to align these activities and our energies with the direction of the organization.

The Prehospital Care Research Forum

wishes to thank our Corporate Partners

•FOUNDING PARTNER•



•BENEFACTORS•



•PARTNERS•

Ferno

SSCOR, Inc.

Zoll Medical Corp.

with contributions from

Brady Publishing

and gifts from

Armstrong Medical Industries

and

Nellcor Puritan Bennett

Committee Reports

Abstract - Harold Cohen, Chair

Greetings to all Research Forum members and colleagues. As we enter our "busy" season, I would like to thank all Abstract committee members in advance for (a) prompt attention to the abstracts, and (b) using the on-line review mechanism. You will receive detailed instructions on the next review process in early November.

We have been in contact with Brian McGuire at University of Maryland, Baltimore County (UMBC) and are arranging to place a presentation on their distance learning sites. Next year we hope to personally meet with members of their senior undergraduate and graduate programs to encourage submissions to PCRF. We also hope to outreach to organizations such as IAFC, National Fire Academy, AAA and similar groups to encourage abstract submissions.

Some PCRF associations are concerned about assisting others with abstract preparation. This is OK, provided that you excuse yourself from grading that abstract.

(Continued on page 4)

One-day Workshop Introduced at NAEMSE

The Prehospital Care Research Forum recently premiered a one-day workshop titled "Getting Your Classroom into Research: How to Do It!" at the National Association of EMS Educators Annual Conference in Phoenix. Aimed at teaching students how to answer the questions they encounter in their practice, participants in the workshop learned how to create a foundation for acquiring knowledge and developing critical thinking skills.

Topics included asking questions and interpreting the answers, and conducting MEDLINE searches. Students were introduced to educational hands-on tricks and tools and demonstrations in research and its impact in the classroom. For information on bringing this exciting workshop to your area contact PCRF at (310) 794-8798 or visit our Web site at www.pcrf.mednet.ucla.edu.

AWARDS

Over 100 conference participants attended the presenter's luncheon to hear the exciting research. Richard Cherry, SUNY Upstate Medical University, Syracuse, recipient of the Best Oral Presentation offered his work, "Does Level of Alertness Differ for Day vs. Night Paramedic Students?" Congratulations to the presenters and thank you to everyone who participated in this year's Call for Abstracts.

We're pleased to report that abstract submissions can now be made electronically on the Research Forum Web site. Abstracts in the category of clinical, systems, management, and personnel will be presented at the 19th Annual EMS Today Conference, March 14-17, 2001, in Baltimore, Md. Abstracts in the category of education will be presented at the National Association of EMS Educators Conference, Sept. 13-15, 2001, in Pittsburgh, Pa.

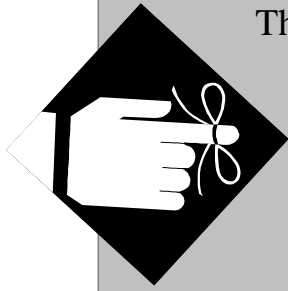
This year, as in past years, all submissions will be evaluated and ranked according to a peer review process. Authors of those studies representing the most original scientifically based work of greatest impact to prehospital emergency medicine will be invited to present their material. Check out our Web site at www.pcrf.mednet.ucla.edu for more information on the Prehospital Care Research Forum's 2001 Call for Abstracts.

(Continued from page 1)



*Joseph Worley,
Tualain Valley Fire & Rescue*

Remember...



The Prehospital Care
Research Forum
Call for Abstracts
**Deadline for
Submissions**

Friday, October 27, 2000

Forum Surveys Researchers

A survey was recently developed and sent to former workshop attendees to determine if their participation in the workshop has affected their ongoing involvement in research. A similar survey went to people who have submitted research to PCRf. Approximately one-third of the surveys were returned and have been entered into a database for analysis. The results of the survey will be made available in the near future. If you would like to participate in the survey please contact PCRf immediately at (310) 794-8798 or via e-mail at pcrf@mednet.ucla.edu, and a survey will be sent to you electronically.

Committee Reports *(Continued from page 3)*

I am looking forward to a great review season and to seeing everyone in Baltimore next March. Thank you for your continued expertise.

Education - Matthew Zavarella, Chair

The education committee has been very busy! Liz Criss, Andy Stern, Bob Delagi, and Chuck Crawford have worked relentlessly on the *Introduction to Research* presentation that covers the new Department of Transportation objectives. NAEMSE Research committee was consulted and worked along with the Research Forum to complete the undertaking. I would like to thank Liz Criss and all of those who devoted time and energy to the project.

Communications - Nancy Hays, Chair

Although we are the newest PCRf committee (only a few months old), we are pleased to share

one of our ideas already — *The Forum News*. We hope this newsletter helps us maintain contact and keep everyone abreast of developments and opportunities.

Besides the newsletter, we have recommended a series of communications, beginning with new members. Each new member will receive a standard packet of information to help them become better acquainted with PCRf and the people associated with it. We are also researching ways to help current members communicate better with each other and our partners and supporters. Please let me know if you have any ideas or suggestions.

Information & Resources - Jim Dernocoeur, Chair *(No report is available at this time.)*



Prehospital Care Research Forum
924 Westwood Blvd., Suite 720
Los Angeles, CA 90095-1369

HD88